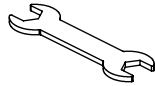


ASSEMBLY
INSTRUCTIONS FOR:
RZK8, RZK8RNG

TOOLS INCLUDED

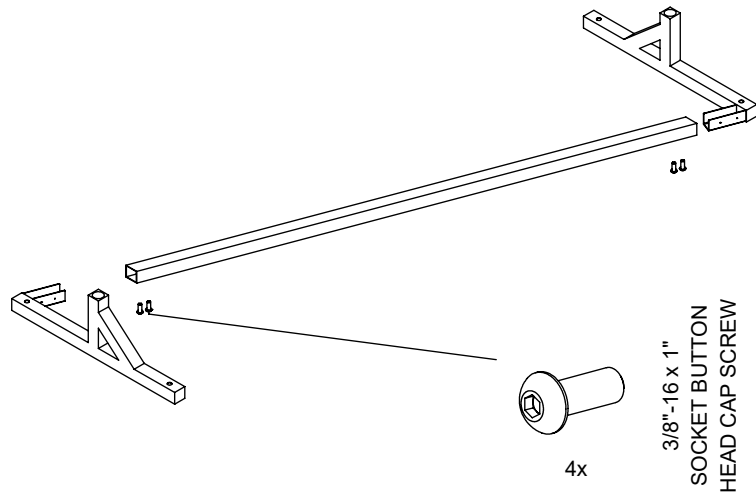


WRENCH



ALLEN KEY

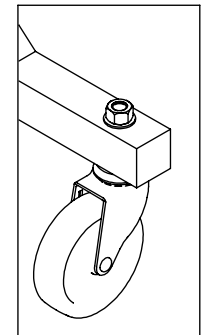
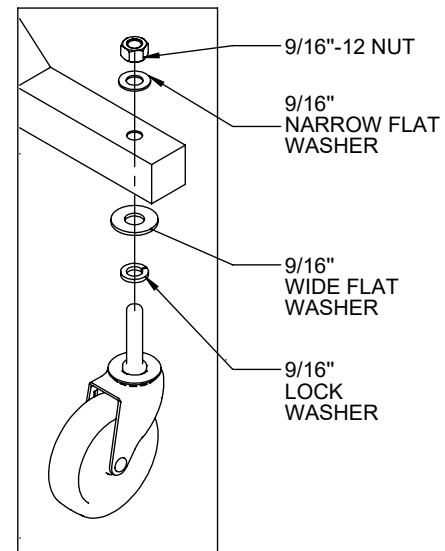
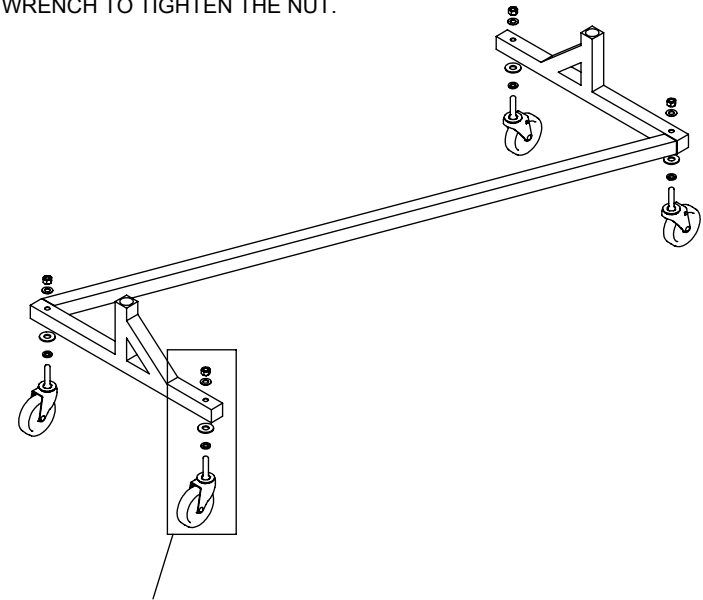
1



2

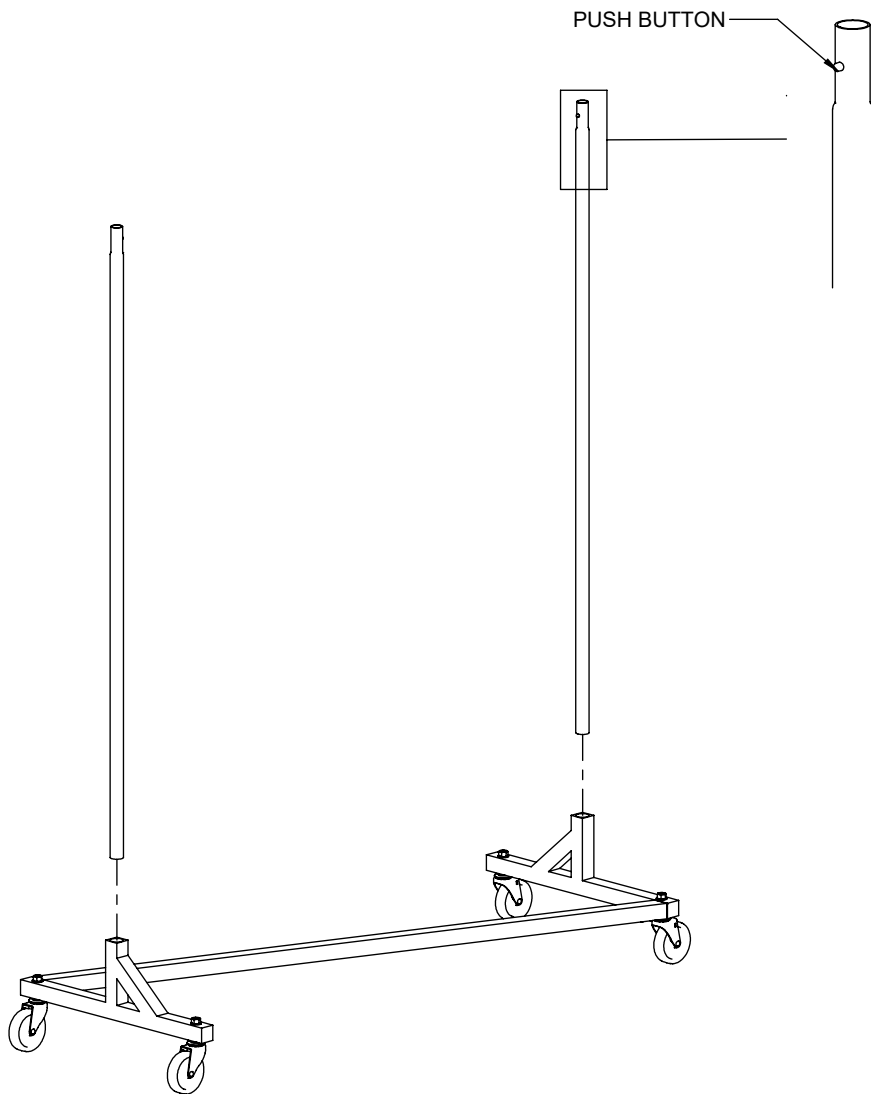
ASSEMBLE CASTERS TO BASE WITH WASHERS AND NUT.

USE WRENCH TO TIGHTEN THE NUT.



ASSEMBLED VIEW

3 ALIGN PUSH BUTTONS TOWARDS INSIDE.



4 INSERT HANG BAR INTO UPRIGHTS.

