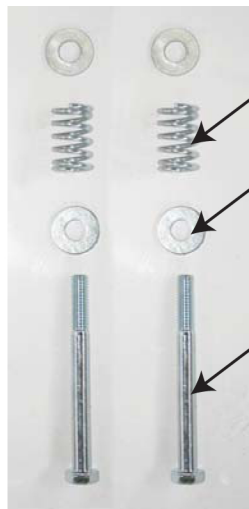


Flexible Mannequin Assembly Instructions

ATTENTION: PLEASE READ ALL INSTRUCTIONS BEFORE BEGINNING.
Failure to follow instructions can lead to mannequin damages.

Hardware for Leg Attachment



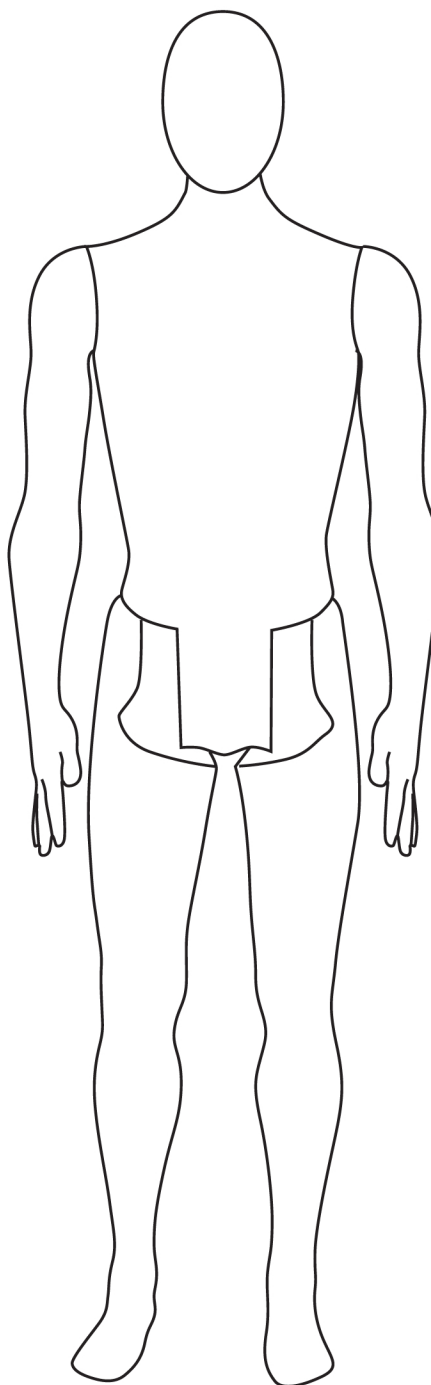
Spring (x2)

Washer (x4)

Bolt (x2)

**Note: Use Wrench with a 1/2"
socket and extension

Complete Front View



Complete Side View



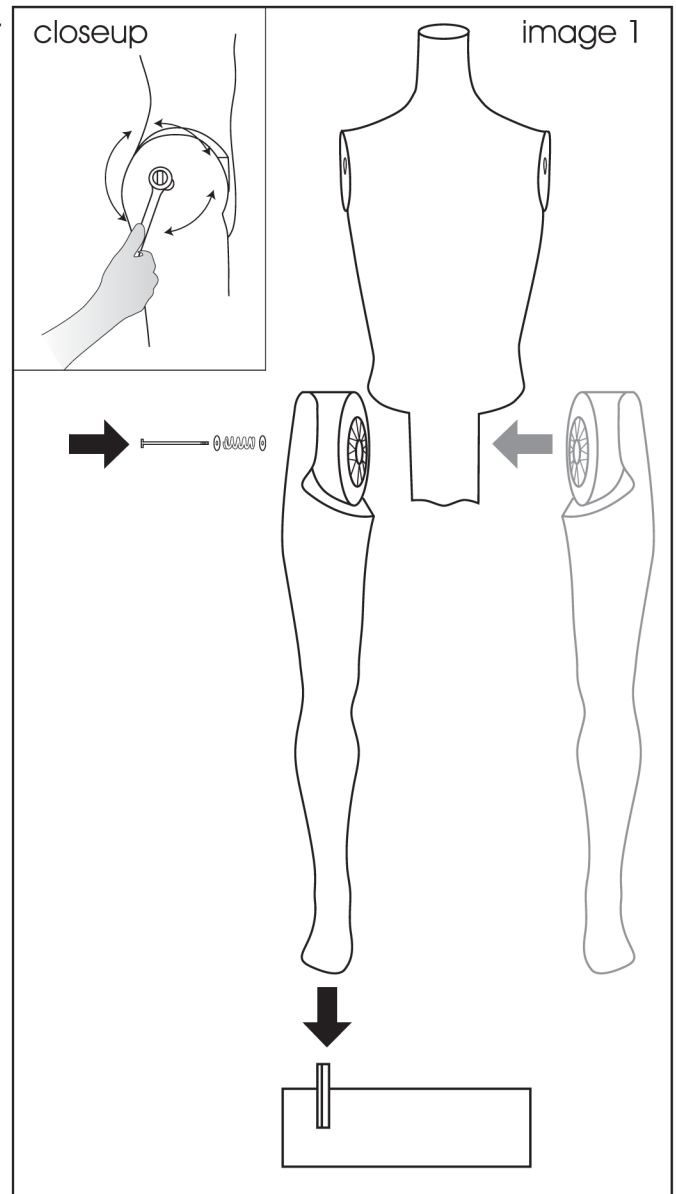
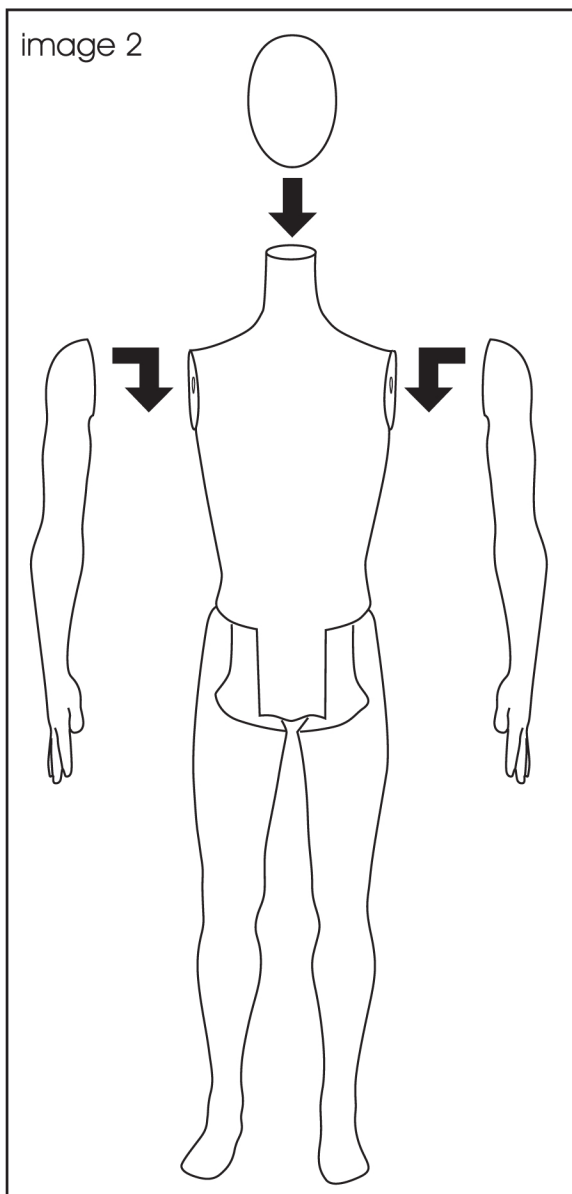
Flexible Mannequin Assembly Instructions

ATTENTION: PLEASE READ ALL INSTRUCTIONS BEFORE BEGINNING.
Failure to follow instructions can lead to mannequin damages.

Step 1 - Leg Attachment

To attach each leg, use a wrench with a 1/2" socket and extension to connect the bolt, washers and spring in order shown below. Tighten bolt completely, then loosen one full turn in opposite direction. (See image 1 closeup)

For stand attachment, begin with the right leg, align hole in foot with post on base and lower into place.



Step 2 - Arms & Head Attachment

Arms - Align arm with shoulder hardware. Push down to lock into place.

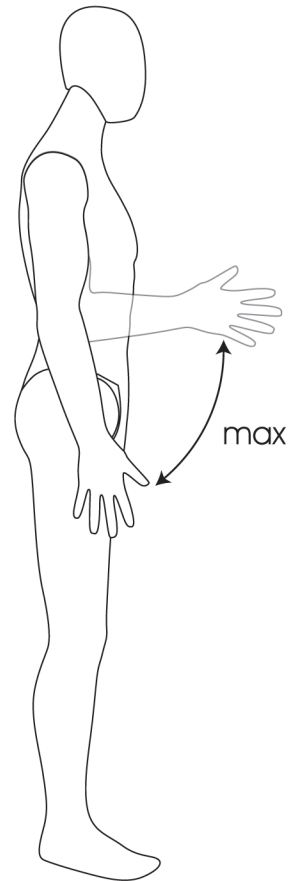
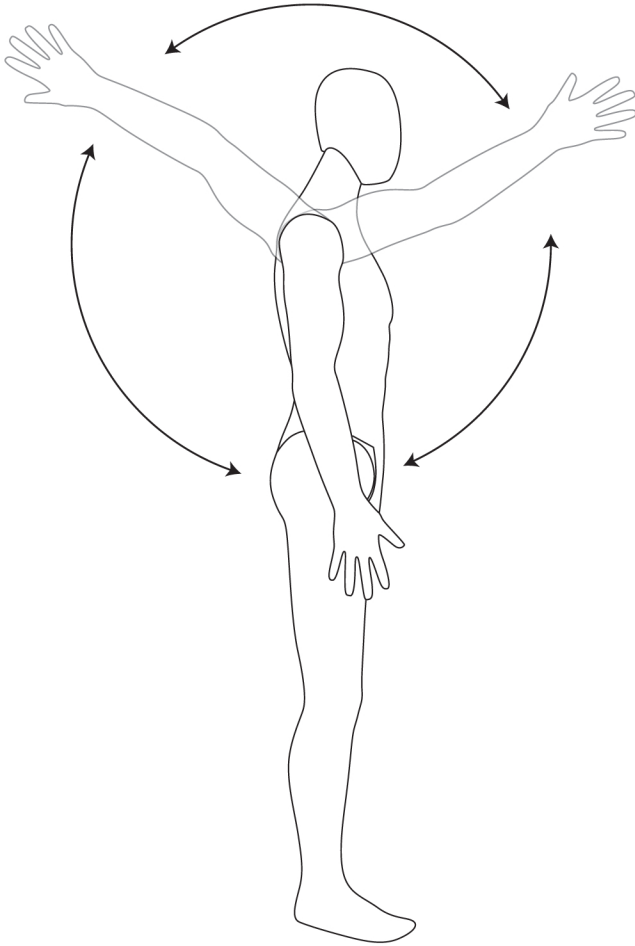
Head - Place head onto neck of torso.
(image 2)

Flexible Mannequin Articulation

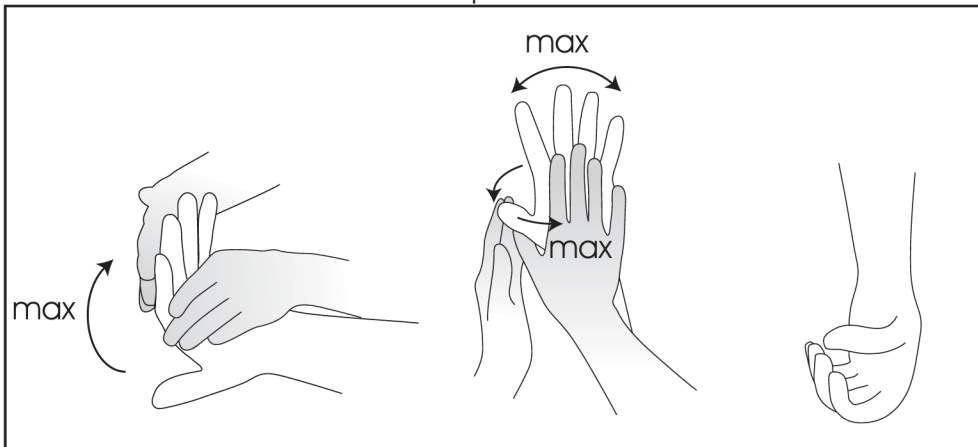
ATTENTION: PLEASE READ ALL INSTRUCTIONS BEFORE BEGINNING.
Failure to follow instructions can lead to mannequin damages.

Upper Body Articulation

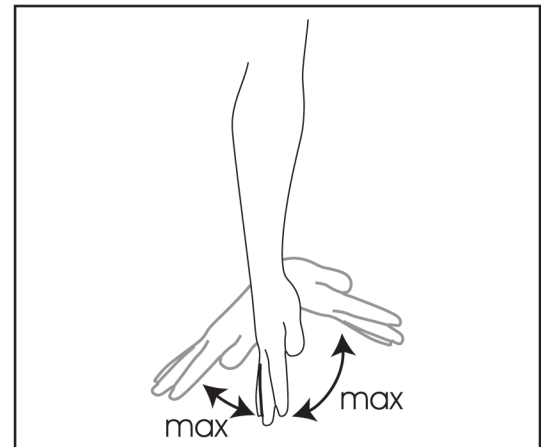
Arm Capabilities



Hand Capabilities



Wrist Capabilities

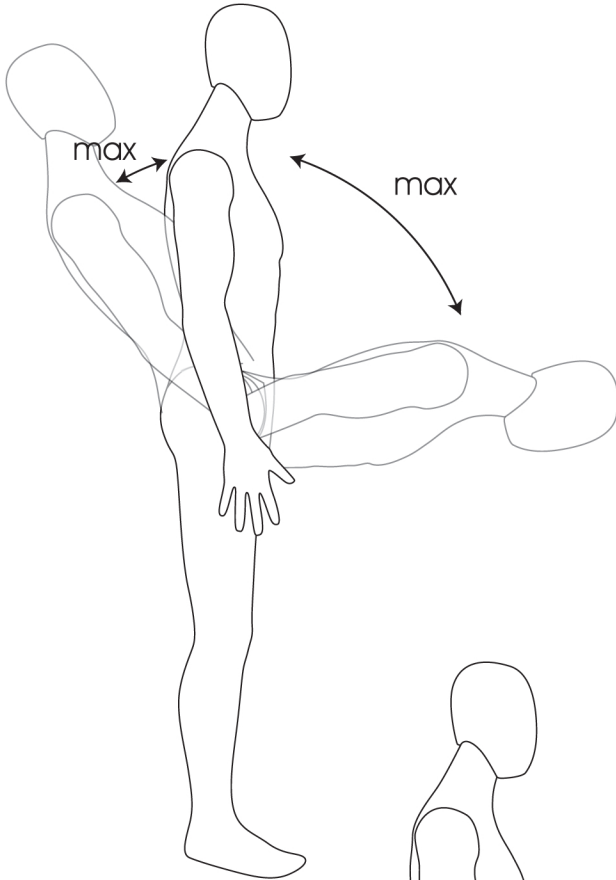


Flexible Mannequin Articulation

ATTENTION: PLEASE READ ALL INSTRUCTIONS BEFORE BEGINNING.
Failure to follow instructions can lead to mannequin damages.

Mid Body Articulation

Hip Capabilities



Lower Body Articulation

Leg Capabilities

